

McCUNE'S REPEAT AS NWIJTPA YOUTH ADULT CHAMPIONS

Former Andrean star wins 4th Youth-Adult, 9th Overall NWIJTPA Title



Andrean grad Kevin McCune seems to understand how to pick winning partners when it comes to the NWIJTPA Youth Adult challenge. The PurdueNorthwest freshman claimed his fourth title in five attempts, once again holding up his older partner and dad Eugene. The young flamethrower teamed with Kevin Mikalouski for his first two crowns, then replaced him with his dad for his latter two crowns.

The McCune's defeated Hammond's Tyler Cook and his partner John Verbich in the best of three baker finals 2-1 (234-209, 233-248, 203-172). The match was highlighted by the exciting second game that saw Cook outduel the younger McCune down the stretch as both teams put on a show the back half of game 2. In the end, though the McCune tandem simply had too much fire power for Cook - Verbich who were looking for their first NWIJTPA title.

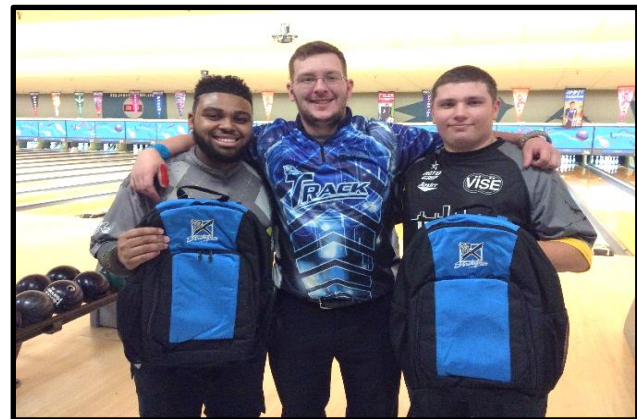
Verbich and Cook were the top qualifiers with a 2,116 (211.6 average) in the field of 56 boys teams which averaged a respectable 183.9 on the difficult WTBA Beijing pattern. McCune collected \$500 in scholarships, an EFX champions jersey and banner, and a KR Strikeforce bowling backpack bag. Cook will deposit \$400 into his SMART account while also adding a KR Strikeforce bag to his equipment portfolio.

Other finalists included 3rd place finishers Manny Sanchez - Kevin Mikalouski, Colton Baker - Nick Graveel; 5th place finishers Jalen Mosley - Eddie Frederick, Jordan Chavez - Kevin Kullman; and 7th place finishers Kole Matzke - Keith Gakle, Ryan Winters - Andrew Heritage, Chris Albanese - John Riffle, and Harry Musser - Jerry James Jr. An average of 196.9 was needed to advance to the baker championship round.

Total scholarships distributed to the boys winners was \$2,825.

Others earning scholarships were 11th place finishers Aiden Swinford-

Randy Mewes, and U15 high finisher Connor Pula - Jimmy Kraushaar. Chris Albanese led the 56-person youth boys field with a 1,124 total (224.8 avg) where only 9 players finished plus on the day for the youth. Verbich led the men's field with a 1,206 (241.2 avg) while 8 other's also surpassed the 200 mark in average. This marks back to back events Albanese has topped the field during qualifying.



Emily Payne and Christine Munsie Capture Youth Adult Title

Tandem take down Indianapolis duo of Chelsey Jines and Kristin Smith

Lake Central's Emily Payne, bowling in her first NWIJTPA event of the season due to marching band commitments, made a loud return by teaming with Indiana USBC State Hall of Fame member Christine Munsie to capture the 2017 Youth Adult Doubles title. This is Payne's first tour title in her young career.

The tandem defeated the Indianapolis pair of Chelsey Jines (current Indiana High School bowling average leader) and Kristin Smith by the scores of 172-159, 150-177, and 198-132. Both teams advanced to the finals with thrilling 2-1 wins in the semi finals where Jines-Smith defeated Megan Grams and Robin Hickman while the champions downed U15 standout from Hanover Central Marissa Metcalfe and her NCAA All-American partner from Univ. of Nebraska Kelly Belzeski.

Jines led the 40 person girls field with a 1,004 (200.8 avg) while her and her partner led qualifying with a 1,914 total.

The girls field averaged 170.5 as a group while the average required to advance to the championship round was 180.2. Other finalists included 5th place finishers Brooklynn Schutz - Angelique Mckeney, Sarah Voiers - Dakotah Hazelwood and 7th place finishers Christina Camp - Alice Krucek (defending champions), Baylee Dill - Theresa Smith-Dill, Carly Zuklin - Julia Bond, and Heather Waters - Alexis Carter.



Zuklin, a 13 year-old up and coming Highland product, became the youngest player in tour history to advance to a championship round as her and her partner Julia Bond (Univ. Nebraska / Team USA) grabbed the 10th and final qualifying spot. Zuklin's quest for her first title ended with a first round loss to Marissa Metcalfe and partner Kelly Belzeski, a former NWIJTPA Player of the Year.

The loan junior gold nationals spot was secured by Jines, who, along with Payne were awarded KR Strikeforce backpack bowling bags for their top finishes.



Theresa Smith-Dill and Alice Krucek paced the adult ladies scoring. Both posted 1,009 (201.8 avg) totals.

In total, \$5,000 (\$5,500 w/ brackets) was awarded in scholarships at the event with an additional \$1,000 in scholarships being allocated to the season ending Tour Championships event. Thanks to Ebonite International and KR Strikeforce for contributing to this event's prize fund/package as well as the great support from the adult bowlers and parents who helped raise nearly \$900 in prize fund additions through the ball raffle, 50-50, and brackets.

The field of 96 teams (192 bowlers) was the largest in NWIJTPA history.

Thanks also to Stardust Bowl III for their support of our tour and added contribution to the prize fund.

NWIJTPA YOUTH ADULT DOUBLES

SCHOLARSHIP DISTRIBUTIONS (POINTS)

BOYS - Plus "X" JG spots

| | | |
|-------|-------|----------------|
| 1ST | 100.0 | KEVIN MCCUNE |
| 2ND | 80.0 | TYLER COOK |
| 3RD | 60.0 | MANNY SANCHEZ |
| 3RD | 60.0 | COLTON BAKER |
| 5TH | 45.0 | JORDAN CHAVEZ |
| 5TH | 45.0 | JALEN MOSLEY |
| 7TH | 35.0 | KOLE MATZKE |
| 7TH | 35.0 | RYAN WINTERS |
| 7TH | 35.0 | CHRIS ALBANESE |
| 7TH | 35.0 | HARRY MUSSER |
| 11TH | 25.0 | AIDEN SWINFORD |
| U15HQ | 10.0 | CONNOR PULA |

565.0

BRACKETS

| | |
|------|------------------|
| 13.0 | CHRIS ALBANESE |
| 2.0 | MARYSSA CAREY |
| 3.0 | ISIAH LUNA |
| 5.0 | MEGHAN MCGEE |
| 5.0 | MARISSA METCALFE |
| 13.0 | JALEN MOSLEY |
| 5.0 | EMILY PAYNE |
| 3.0 | CONNER PULA |
| 6.0 | MANNY SANCHEZ |
| 9.0 | AUSTIN SCHULTZ |
| 5.0 | BROOKLYNN SCHUTZ |
| 5.0 | DAVID WINTERS |
| 20.0 | RYAN WINTERS |

94.0

GIRLS - Plus "1" JG Spots (Chelsey Jines)

| | | |
|-----|------|------------------|
| 1ST | 85.0 | EMILY PAYNE |
| 2ND | 70.0 | CHELSEY JINES |
| 3RD | 50.0 | MARISSA METCALFE |
| 3RD | 50.0 | MEGAN GRAMS |
| 5TH | 40.0 | SARAH VOIERS |
| 5TH | 40.0 | BROOKLYNN SCHUTZ |
| 7TH | 20.0 | CHRISTINA CAMP |
| 7TH | 20.0 | BAYLEE DILL |
| 7TH | 20.0 | CARLY ZUKLIN |
| 7TH | 20.0 | HEATHER WATERS |

U15HQ 10.0 KYLEE TREXLER

425.0

HIGH QUALIFIERS (MEMBERS ONLY)

BOYS CHRIS ALBANESE
GIRLS N/A

AMOUNT TO TOUR CHAMPIONSHIPS
AND YEAR END POINTS RACE and Other

217.0

| | |
|--|---------|
| TOTAL TO SCHOLARSHIPS (EXCLUDING BRACKETS) | 1,207.0 |
| PERCENT ENTRY FEE TO AWARDS FUND | 86.4% |

NWIJTPA EBONITE YOUTH ADULT CHAMPIONSHIP ROUND

Best 2 of 3 Baker format, youth bowler must be anchor - games ending in tie decided by two ball roll off (1 per player)

BOYS - Top 10 Advance

#4 SANCHEZ, MANNY - MIKALOUSKI, KEVIN

140-180-182

LANES 45-46

SANCHEZ, MANNY - MIKALOUSKI, KEVIN

195-166-159

186-173

#9 MATZKE, KOLE - GAKLE, KEITH

SANCHEZ, MANNY - MIKALOUSKI, KEVIN

LANES 39-40

178-171-146

#5 WINTERS, RYAN - HERITAGE, ANDREW

182-171

LANES 43-44

178-152

MOSLEY, JALEN - FREDERICK, EDDIE

COOK, TYLER - VERBICH, JOHN

185-173

Lanes 41-42

#8 MOSLEY, JALEN - FREDERICK, EDDIE

246-165-211

#1 COOK, TYLER - VERBICH, JOHN

209-248-172

#3 ALBANESE, CHRISTOPHER - RIFFLE, JOHN

177-173

LANES 41-42

CHAVEZ, JORDAN - KULLMAN, KEVIN

178-184

212-182-175

#10 CHAVEZ, JORDAN - KULLMAN, KEVIN

LANES 33-34

**KEVIN MCCUNE
& EUGENE MCCCUNE**

#6 MUSSER, HARRY - JAMES JR, JERRY

180-192-182

LANE 39-40

222-170-196

BAKER, COLTON - GRAVEEL, NICK

180-244-146

Lanes 45-46

#7 BAKER, COLTON - GRAVEEL, NICK

187-149-193

234-233-203

MCCUNE, KEVIN - MCCUNE, EUGENE

231-197-233

#2 MCCUNE, KEVIN - MCCUNE, EUGENE

NWIJTPA EBONITE YOUTH ADULT CHAMPIONSHIP ROUND

Best 2 of 3 Baker format, youth bowler must be anchor - games ending in tie decided by two ball roll off (1 per player)

GIRLS - Top 10 Advance

Best 2 of 3 Baker format, youth bowler must be anchor - games ending in tie decided by two ball roll off (1 per player)

#4 CAMP, CHRISTINA - KRUCEK, ALICE

139-178-166

LANES 27-28

176-110-174

#9 GRAMS, MEGAN - HECKMAN, ROBIN

GRAMS, MEGAN - HECKMAN, ROBIN

176-162-165

GRAMS, MEGAN - HECKMAN, ROBIN

202-158-149

#5 SCHUTZ, BROOKLYN - MCKENY, ANGELIQUE

188-189

LANES 29-30

159-175

#8 DILL, BAYLEE - SMITH-DILL, THERESA

LANES 33-34

175-171-156

SCHUTZ, BROOKLYN - MCKENY, ANGELIQUE

Lanes 31-32

168-168-183

#1 JINES, CHELSEY - SMITH, KRISTIN

JINES, CHELSEY - SMITH, KRISTIN

159-177-132

3 METCALFE, MARISSA (u15) - BELZESKI, KELLY

208-158

LANES 33-34

177-146

#10 ZUKLIN, CARLY (u15) - BOND, JULIA

METCALFE, MARISSA (u15) - BELZESKI, KELLY

204-182

LANES 29-30

METCALFE, MARISSA (u15) - BELZESKI, KELLY

142-173-155

#6 WATERS, HEATHER - CARTER, ALEXIS

161-159-194

LANES 31-32

155-177-209

7 VOIERS, SARAH - HAZELWOOD, DAKOTAH

180-168

VOIERS, SARAH - HAZELWOOD, DAKOTAH

Lanes 27-28

172-150-198

PAYNE, EMILY - MUNSIE, CHRISTINE

181-168-196

#2 PAYNE, EMILY - MUNSIE, CHRISTINE

**EMILY PAYNE &
CHRISTINE MUNSIE**

NWI JTPA EBONITE YOUTH ADULT Qualifying

BOYS

| | TeamName | CITY/STATE | JG DIVISION | Sum of YOUTH TOTAL | Sum of ADULT TOTAL | Sum of TEAM TOTAL |
|----|--|--------------------|-------------|--------------------|--------------------|-------------------|
| 1 | COOK, TYLER - VERBICH, JOHN | LAFAYETTE, IN | (blank) | 910 | 1,206 | 2,116 |
| 2 | MCCUNE, KEVIN - MCCUNE, EUGENE | MUNSTER, IN | (blank) | 1,052 | 1,016 | 2,068 |
| 3 | ALBANESE, CHRISTOPHER - RIFFLE, JOHN | GRIFFITH, IN | (blank) | 1,124 | 911 | 2,035 |
| 4 | SANCHEZ, MANNY - MIKALOUSKI, KEVIN | CHICAGO, IL | (blank) | 1,043 | 982 | 2,025 |
| 5 | WINTERS, RYAN - HERITAGE, ANDREW | LIVONIA, MI | (blank) | 1,025 | 993 | 2,018 |
| 6 | MUSSER, HARRY - JAMES JR, JERRY | (blank) | (blank) | 923 | 1,093 | 2,016 |
| 7 | BAKER, COLTON - GRAVEEL, NICK | SOUTH BEND, IN | (blank) | 1,017 | 989 | 2,006 |
| 8 | MOSLEY, JALEN - FREDERICK, EDDIE | INDIANAPOLIS, IN | (blank) | 1,035 | 965 | 2,000 |
| 9 | MATZKE, KOLE - GAKLE, KEITH | LAPORTE, IN | (blank) | 996 | 975 | 1,971 |
| 10 | CHAVEZ, JORDAN - KULLMAN, KEVIN | CREST HILL, IL | (blank) | 972 | 997 | 1,969 |
| 11 | SWINFORD, AIDEN - MEWES, RANDY | HEBRON, IN | (blank) | 1,036 | 923 | 1,959 |
| 12 | PULA, CONNOR (u15) - KRAUSHAAR, JIMMY | EVERGREEN PARK, IL | (blank) | 910 | 1,039 | 1,949 |
| 13 | WINTERS, DAVID - HERNANDEZ, RYAN | LIVONIA, MI | (blank) | 1,019 | 911 | 1,930 |
| 14 | QUINN JR, SHAUN - QUINN, SHAUN | EVERGREEN PARK, IL | (blank) | 891 | 1,037 | 1,928 |
| 15 | RAYNER, BLAKE - PETROSKI, DON | PORTAGE, IN | (blank) | 993 | 930 | 1,923 |
| 16 | LEYBA, DEREK JR - FREEBORN, TJ | CROWN POINT, IN | (blank) | 944 | 955 | 1,899 |
| 17 | MIYAGI, JACE - ZEHNER, DUSTIN | (blank) | (blank) | 945 | 952 | 1,897 |
| 18 | BANGHART, DAMIAN - LUBARSKI, JOHN | WARSAW, IN | (blank) | 877 | 1,008 | 1,885 |
| 19 | RIDGWAY, IAN - RIDGWAY, TODD | NAPERVILLE, IL | (blank) | 934 | 944 | 1,878 |
| 20 | SANDERS, CARRINGTON - BOHN, DERRICK | MUNSTER, IN | (blank) | 863 | 1,008 | 1,871 |
| 21 | KOTTKE, CONNOR - CORRY, TIM | (blank) | (blank) | 897 | 966 | 1,863 |
| 22 | RODRIGUEZ, TOMMY - TSKIRIOUS, STEVE | HAMMOND, IN | (blank) | 916 | 947 | 1,863 |
| 23 | CARTER, ZACHARY - ROSING, LOGAN | PORTAGE, IN | (blank) | 974 | 886 | 1,860 |
| 24 | TAYLOR, SEAN - O'ROURKE, RYAN | HASTINGS, MI | (blank) | 886 | 973 | 1,859 |
| 25 | SMITH, ERIC - TAYLOR, JOSH | INDIANAPOLIS, IN | (blank) | 835 | 1,024 | 1,859 |
| 26 | BALANDES, TYLER - PENA, TONY | LOCKPORT, IN | (blank) | 903 | 956 | 1,859 |
| 27 | NORTHOUSE, DAVID - BATLINER, ADAM | GRAND RAPIDS, MI | (blank) | 913 | 945 | 1,858 |
| 28 | SISK, JACOB - BRANDT, SAM | ROSSVILLE, IN | (blank) | 926 | 917 | 1,843 |
| 29 | SCHULTZ, AUSTIN - ROSENQUIST, TED | PORTAGE, IN | (blank) | 968 | 868 | 1,836 |
| 30 | BLISS, RYAN - KROOWSYK, ROBBIE | PORTAGE, IN | (blank) | 866 | 967 | 1,833 |
| 31 | HAMPTON, JIMMY - HOOD, TAYLOR | PORTAGE, IN | (blank) | 941 | 885 | 1,826 |
| 32 | OLSZEWSKI, EDDIE (u15) - OLSZEWSKI, ED | GRIFFITH, IN | (blank) | 835 | 989 | 1,824 |
| 33 | ACHTEN, ETHAN - ACHTEN, LARRY | CHESTERTON, IN | (blank) | 860 | 960 | 1,820 |
| 34 | WARD, NATHAN - HANSEN, TYLER | GRIFFITH, IN | (blank) | 952 | 847 | 1,799 |
| 35 | CAREY, CAYLEB (u15) - GLASS, JACOB | HOBART, IN | (blank) | 905 | 892 | 1,797 |
| 36 | JONES, CHARLIE (u15) - SNUFFER, JEFF | PORTAGE, IN | (blank) | 856 | 937 | 1,793 |
| 37 | BOWMAN, ANDREW - WOLOSZYN, RICK | GRIFFITH, IN | (blank) | 872 | 917 | 1,789 |
| 38 | BROWN, DANIEL - BROWN, JOE | CROWN POINT, IN | (blank) | 900 | 882 | 1,782 |
| 39 | KAMMER, ZACH - KAMMER JR, BOB | CROWN POINT, IN | (blank) | 768 | 1,011 | 1,779 |
| 40 | TROMBETTA, CADEN - TROMBETTA, VINNIE | HIGHLAND, IN | (blank) | 877 | 897 | 1,774 |
| 41 | OEHLER, GRANT - OEHLER, MIKE | CARMEL, IN | (blank) | 855 | 917 | 1,772 |
| 42 | SEVERSON, JEFFREY - CARTER, DEREK | PORTAGE, IN | (blank) | 904 | 844 | 1,748 |
| 43 | LAWRENCE, AMEER - KRUCEK, SAM | HAMMOND, IN | (blank) | 1,027 | 712 | 1,739 |

| | TeamName | CITY/STATE | JG DIVISION | Sum of YOUTH TOTAL | Sum of ADULT TOTAL | Sum of TEAM TOTAL |
|----|---------------------------------------|-----------------|-------------|--------------------|--------------------|-------------------|
| 44 | BLYTHE, JOSH - BLYTHE, RON | ST. JOHN, IN | (blank) | 918 | 820 | 1,738 |
| 45 | LAWSON, JOHN - LANGEL, JEREMY | (blank) | (blank) | 837 | 898 | 1,735 |
| 46 | FREEBORN, MARTY - DEWEESE, JAKE | DYER, IN | (blank) | 899 | 831 | 1,730 |
| 47 | SIMS, TYLER - SIMS, KEVIN | FRANKFORT, IN | (blank) | 854 | 873 | 1,727 |
| 48 | CARTWRIGHT, KYLE - KROUSH, JIM | GRIFFITH, IN | (blank) | 891 | 823 | 1,714 |
| 49 | COLLINS, JAKE - COLLINS, DON | GRIFFITH, IN | (blank) | 858 | 844 | 1,702 |
| 50 | MCDONALD, PATRICK - MCDONALD, KEITH | CROWN POINT, IN | (blank) | 787 | 911 | 1,698 |
| 51 | ZIMMERMAN, MICHAEL - ZIMMERMAN, DAN | HIGHLAND, IN | (blank) | 802 | 893 | 1,695 |
| 52 | OBERMEYER, CARTER - HAJDUK, PHIL | HIGHLAND, IN | (blank) | 771 | 886 | 1,657 |
| 53 | WHEELER, AUSTIN - DUKES, CLIFF | (blank) | (blank) | 739 | 897 | 1,636 |
| 54 | THURSTON, AVERY - TACKETT, GOMER | HUNTINGTON, IN | (blank) | 836 | 791 | 1,627 |
| 55 | LUNA, ISIAH - LADD, AUSTIN | PORTAGE, IN | (blank) | 836 | 791 | 1,627 |
| 56 | GRACIA, MITCHELL (u15) - LLANES, PAUL | OAK FOREST, IL | (blank) | 759 | 839 | 1,598 |

| | | | |
|----------------------------|-------|-------|-------|
| 56 Team Field Average | 181.9 | 186.0 | 183.9 |
| Top 10 Average | 201.9 | 202.5 | 202.2 |
| Percentage of Players Plus | 16% | 16% | |
| Cut Line | | | 196.9 |

NWI JTPA EBONITE YOUTH ADULT Qualifying

GIRLS

| | TeamName | CITY/STATE | JG DIVISION | Sum of YOUTH TOTAL | Sum of ADULT TOTAL | Sum of TEAM TOTAL |
|----|---|-------------------|-------------|--------------------|--------------------|-------------------|
| 1 | JINES, CHELSEY - SMITH, KRISTIN | INDIANAPOLIS, IN | U20G | 1,004 | 910 | 1,914 |
| 2 | PAYNE, EMILY - MUNSIE, CHRISTINE | DYER, IN | (blank) | 935 | 953 | 1,888 |
| 3 | METCALFE, MARISSA (u15) - BELZESKI, KELLY | DYER, IN | (blank) | 902 | 962 | 1,864 |
| 4 | CAMP, CHRISTINA - KRUCEK, ALICE | ST JOHN, IN | (blank) | 850 | 1,009 | 1,859 |
| 5 | SCHUTZ, BROOKLYN - MCKENY, ANGELIQUE | ELKHART, IN | (blank) | 861 | 974 | 1,835 |
| 6 | WATERS, HEATHER - CARTER, ALEXIS | CHESTERTON, IN | (blank) | 921 | 905 | 1,826 |
| 7 | VOIERS, SARAH - HAZELWOOD, DAKOTAH | CHESTERTON, IN | (blank) | 914 | 909 | 1,823 |
| 8 | DILL, BAYLEE - SMITH-DILL, THERESA | INDIANAPOLIS, IN | (blank) | 813 | 1,009 | 1,822 |
| 9 | GRAMS, MEGAN - HECKMAN, ROBIN | MICHIGAN CITY, IN | (blank) | 952 | 859 | 1,811 |
| 10 | ZUKLIN, CARLY (u15) - BOND, JULIA | HIGHLAND, IN | (blank) | 804 | 998 | 1,802 |
| 11 | MENDEZ, NIKKI - SZCZEPANSKI, MEGAN | HOMER GLEN, IL | (blank) | 817 | 982 | 1,799 |
| 12 | TREXLER, KYLEE (u15) - CORTESE, NATALIE | CICERO, IN | (blank) | 852 | 932 | 1,784 |
| 13 | BOND, HANNAH - BOND, SARAH | CROWN POINT, IN | U20G | 946 | 804 | 1,750 |
| 14 | BUGNO, SAM - TREVINO-OLVERA, CAMILA | HIGHLAND, IN | U20G | 913 | 834 | 1,747 |
| 15 | YEARSICH, KAITLYN - WITULSKI, LEANNE | ST. JOHN, IN | U20G | 792 | 948 | 1,740 |
| 16 | DOCKERY, EMILY - OLESKY, MACKENZIE | RAVENNA, OH | U20G | 839 | 898 | 1,737 |
| 17 | TREXLER, KEAGAN - CORTESE, AMANDA | CICERO, IN | (blank) | 852 | 885 | 1,737 |
| 18 | FINKE, SARA - AZPETIA, LEXI | HIGHLAND, IN | (blank) | 887 | 840 | 1,727 |
| 19 | LOHSE, BECKY - RHODA, JACKIE | CHESTERTON, IN | (blank) | 843 | 882 | 1,725 |
| 20 | BOHLIN, JULIANNA (u15) - PITCHFORD, HOLLY | ST. JOHN, IN | (blank) | 844 | 880 | 1,724 |
| 21 | RODRIGUEZ, MACAILIN - EATON, KASEY | KENTWOOD, MI | (blank) | 849 | 871 | 1,720 |
| 22 | HEFLIN, MEGAN - BODNAR, MINDY | DYER, IN | (blank) | 884 | 823 | 1,707 |
| 23 | BLYTHE, MADDIE - SCHULER, AMANDA | ST. JOHN, IN | (blank) | 851 | 836 | 1,687 |
| 24 | FOSTER, ALYSSA - PRITCHETT, GINA | LAPORTE, IN | (blank) | 840 | 844 | 1,684 |
| 25 | SITKOWSKI, ISABEL - MATUSIK, NIKKI | ST. JOHN, IN | (blank) | 840 | 842 | 1,682 |
| 26 | HIMDEN, MAKAYLA - LOVING, SHERRY | PORTAGE, IN | (blank) | 805 | 871 | 1,676 |
| 27 | MENDEZ, JENNA - SIEZEGA, LYNDA | HOMER GLEN, IL | U20G | 750 | 905 | 1,655 |
| 28 | CASE, KYLIE - SISK, ANNALEE | (blank) | U20G | 829 | 792 | 1,621 |
| 29 | KELLER, JADE - KELLER, WENDY | GRIFFITH, IN | (blank) | 813 | 806 | 1,619 |
| 30 | ARMSTRONG, TAYLOR - MCLEAN, HALEY | CROWN POINT, IN | (blank) | 794 | 823 | 1,617 |
| 31 | WINNICK, KENDALL - LARSON, CARLY | DEMOTTE, IN | (blank) | 814 | 796 | 1,610 |
| 32 | CAREY, MARYSSA - MOCABY, JADA | HOBART, IN | (blank) | 881 | 719 | 1,600 |
| 33 | KIEFER, AMELIA - KRAUSHAAR, PAIGE | JASPER, IN | (blank) | 827 | 768 | 1,595 |
| 34 | MCGEE, MEGHAN - MCLEAN-ARMSTRONG, MENDY | CROWN POINT, IN | (blank) | 819 | 773 | 1,592 |
| 35 | LAWSON, ELISABETH - OLSZEWSKI, LINDA | GRIFFITH, IN | (blank) | 722 | 817 | 1,539 |
| 36 | ZIMMERMAN, FAITH - BABBITT, JANE | HIGHLAND, IN | (blank) | 691 | 848 | 1,539 |
| 37 | BOHLIN, HANNAH - BOHLIN, SONIA | ST. JOHN, IN | (blank) | 744 | 765 | 1,509 |
| 38 | BATRES, HALEY - GALVAN-BATRES, SHELLIE | (blank) | (blank) | 683 | 792 | 1,475 |
| 39 | WHITE, HAILEE - LLANES, MONICA | (blank) | (blank) | 672 | 763 | 1,435 |
| 40 | HATAGAN, SAMI - HAMPTON, EMILY | VALPARAISO, IN | (blank) | 264 | 297 | 561 |

| | | | |
|----------------------------|-------|-------|-------|
| 56 Team Field Average | 167.4 | 173.5 | 170.5 |
| Top 10 Average | 179.1 | 189.8 | 184.4 |
| Percentage of Players Plus | 3% | 5% | |
| Cut Line | | | 180.2 |